



## Rabbit anti 14-3-3 beta Polyclonal Antibody

Alternative Name(s): YWHAB; tyrosine 3-monooxygenase/tryptophan 5-monooxygenase activation protein, beta polypeptide

### Order Information

- **Description:** 14-3-3 beta
- **Catalogue:** 500-2924
- **Lot:** See label
- **Size:** 100ug/200ul
- **Host:** Rabbit
- **Clone:** nan
- **Application:** IHC(P), WB, IP
- **Reactivity:** Hu, Ms, Rt

### **ANTIGEN PREPARATION**

A synthetic peptide corresponding to N-term of human 14.3.3 beta protein.

### **BACKGROUND**

The 14-3-3 proteins are a family of small, widely expressed, highly conserved cytosolic proteins. 14-3-3 proteins bind to and influence the activities of a diverse group of molecules involved in signal transduction, cell cycle regulation and apoptosis, including Raf, PKC, Bad, Cbl, and c-Bcr. Interactions between 14-3-3 and target proteins are strongly influenced by the phosphorylation state of 14-3-3 and the target protein. 14.3.3 beta is highly expressed in brain tissue. It is critical to cell transformation and mitotic signaling.

### **PURIFICATION**

The Rabbit IgG is purified by Epitope Affinity Purification

### **FORMULATION**

This affinity purified antibody is supplied in sterile Phosphatebuffered saline (pH7.2) containing antibody stabilizer

### **SPECIFICITY**

This antibody recognizes ~28 kDa of human 14.3.3 beta. It does not react to the other isoforms. This antibody reacts with human, rat and mouse. The other species are not tested.

### **STORAGE**

The antibodies are stable for 24 months from date of receipt when stored at -20oC to -70oC. The antibodies can be stored at 2oC-8oC for three month without detectable loss of activity. Avoid repeated freezing-thawing cycles.

### **APPLICATIONS/SUGGESTED WORKING DILUTIONS\***

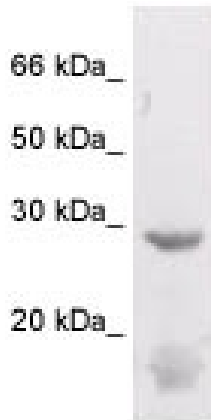
- Western Blot: 0.1-1 µg/ml
- ELISA: 0.01-0.1 µg/ml
- Immunoprecipitation: 2-5 µg/ml
- IHC: 2-10 µg/ml
- Flow cytometry: Not tested
- Molecular Weight: 28.0
- Positive Control: Kidney Tissue
- Cellular Location: Cell Membrane

\*Optimal dilutions should be determined by researchers for the specific applications.

### **FOR RESEARCH USE ONLY.**

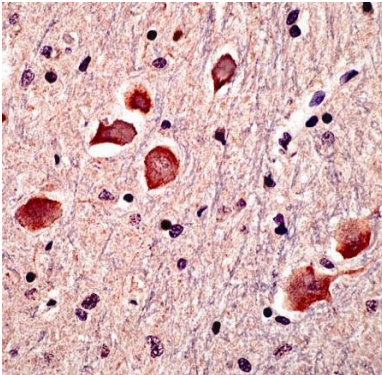
AbboMax, Inc 2528 Qume Drive, Suite 8, San Jose, California 95131, USA  
1 408-573-1898 (Tel). 1 408-573-1858 (Fax). [www.abbomax.com](http://www.abbomax.com) [info@abbomax.com](mailto:info@abbomax.com)

## DATA ATTACHMENTS



Western Blot: The whole lysate derived from 3T3 (20 ug/lane) immunoblotted by Rabbit anti - 14.4.4 (Cat# 500-2924) at 1:200. Observed a major immunoreactive band at molecular weight ~28kDa.

WB: 3T3 cell lysate stained  
by Rbx14.3.3 at 1:200



Immunohistochemistry: Human Brain (FFPE) stained with Rabbit anti-14.3.3-beta (Cat# 500-2924) at 1:100 for 10 min @ RT. Staining of formalin-fixed tissue requires boiling tissue sections in 10 mM Citrate Buffer, pH 6.0 for 10 min followed by cooling at RT for 20 min.

IHC: Human brain stained by Rb x 14.3.3 beta at 1:100

## REFERENCES

### FOR RESEARCH USE ONLY.

AbboMax, Inc 2528 Qume Drive, Suite 8, San Jose, California 95131, USA  
1 408-573-1898 (Tel). 1 408-573-1858 (Fax). [www.abbomax.com](http://www.abbomax.com) [info@abbomax.com](mailto:info@abbomax.com)